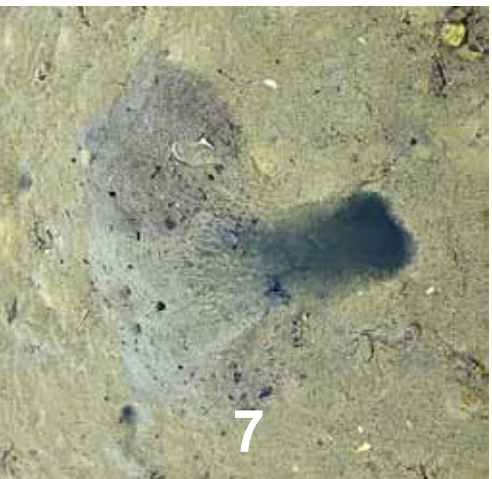
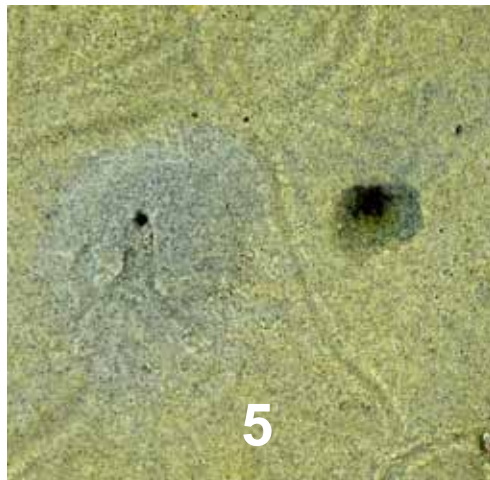
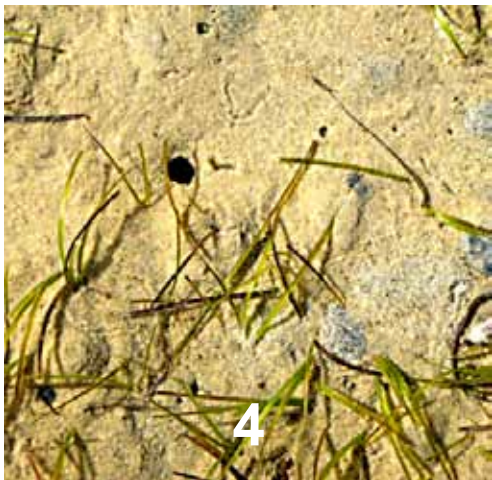


# MUDFLAT MYSTERIES

At first glance mudflats look devoid of life, but a good detective can find evidence of who lives there. Who do you think left these tell-tale signs?



# MUDFLAT MYSTERIES

What evidence do you have that these creatures live on the mudflats?

(These pages can be printed out and used as a reference or print them back-to-back, cut out and used as separate cards.)

## 3 Mud crab



Use their front nippers to shovel mud out of their burrow.

## 2 Bamboo worm



Leave little chimneys of sediment at one end of their burrow.

## 1 Cockle



Use their muscular foot to plough through mud.

## 6 Bent nose clam



Feeding marks are made by long siphons that suck food particles from the surface.

## 5 Ghost shrimp



Burrow entrance looks like a crater and exit like a volcano.

## 4 Mantis shrimp



Burrow entrance is a very clean hole in the mud.

## 9 Mud snail



Turn in a circle while depositing their eggs in layers of sand.

## 8 Lug worm



Ingest sediment and expel it out of one end of their burrow.

## 7 Stalk eyed crab



Kicks sediment out of its burrow.

## 12 Sea Lettuce



Bleaches white when exposed to the sun for long periods.

## 11 Amphipod



Form small bumps over the surface of the mud.

## 10 Black Swan



Swans and ducks feed on mudflats and leave large poos.