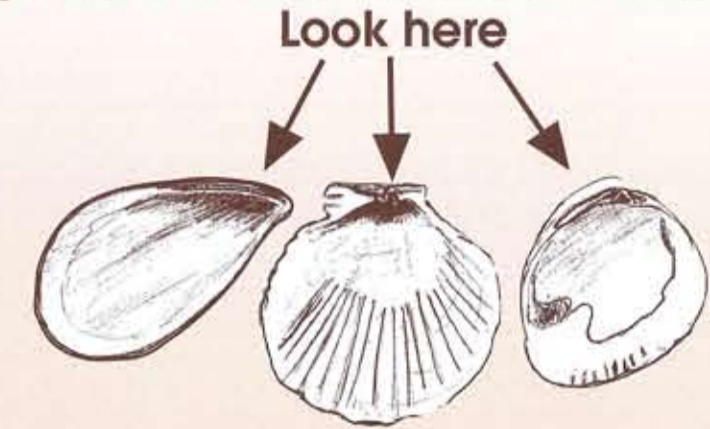


Shell Key

This poster covers shells from the phylum Mollusca.

Start Here

REMEMBER
Do you have all parts of the shell?
Look carefully at the inside to see if it has a hinge where it was attached to another shell.
Look here



ONE SHELL
If there is NO sign of another shell follow this path

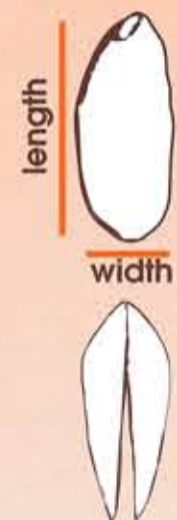
TWO OR MORE SHELLS
Or if there IS sign of another shell follow this path

spiral shaped.

no spiral or just the start of a spiral

two shells (a bivalve)

more than two shells



Holding the shell with the umbo at the top, the shell is much longer than it is wide

and,

from the side both shells are the same shape.

Wings are present on one or both sides of the hinge.

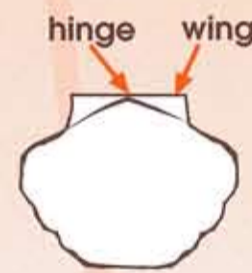
all other shells with two parts

there are no wings beside the umbo

there are eight shell plates

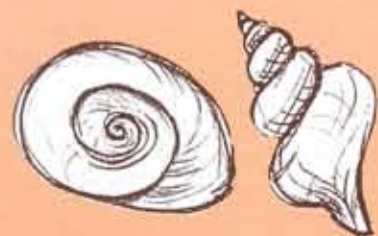
no hole, or a single hole on top, and cone-shaped

more than one hole on top



from the side, both shells have a rounded shape.

from the side, one shell is rounded and the other is flatter, both shells have a bumpy surface.



SNAIL

LIMPET

PAUA

MUSSEL

SCALLOP

CLAM

OYSTER

CHITON