



**WHAT LIVES ON THE ROCKY SHORE?  
TURN THE BLOCKS TO FIND OUT MORE!**

**INSTRUCTIONS:** Print out these pages in colour on the largest paper available (A3 would be good!) so the image fills as much of the page as possible. Trim away the white edges. Fold the paper in half so the quadrat section is on one side and the text and information is on the reverse. Laminate each folded sheet to hold it together and protect it. Lay the 9 squares out on the floor to make a full quadrat (as above). Students choose a block in turn and turn it over to see what lives on or under the boulders.





Barnacles can be hard to count when there are a lot of them together.

Estimate the number!

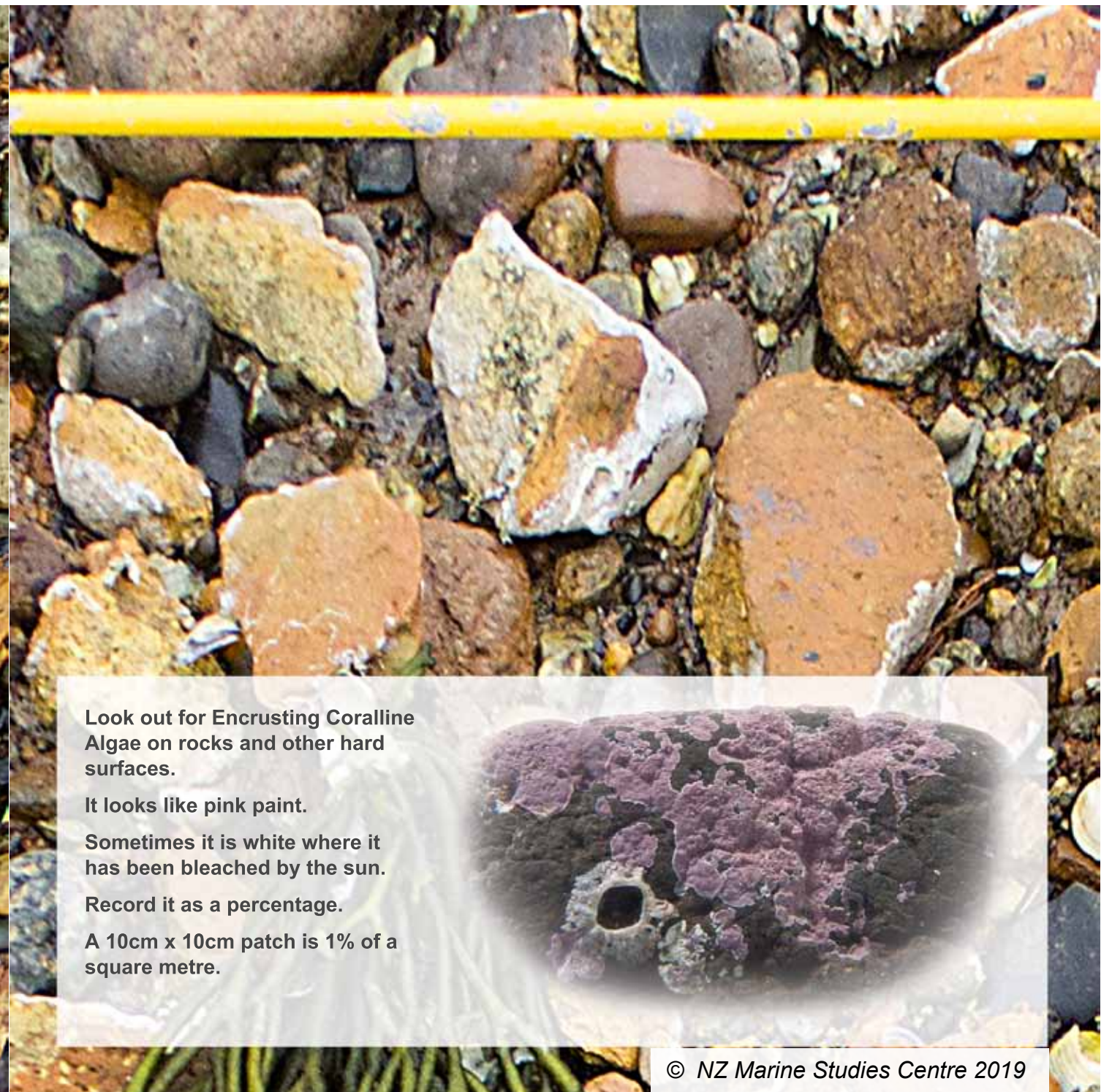
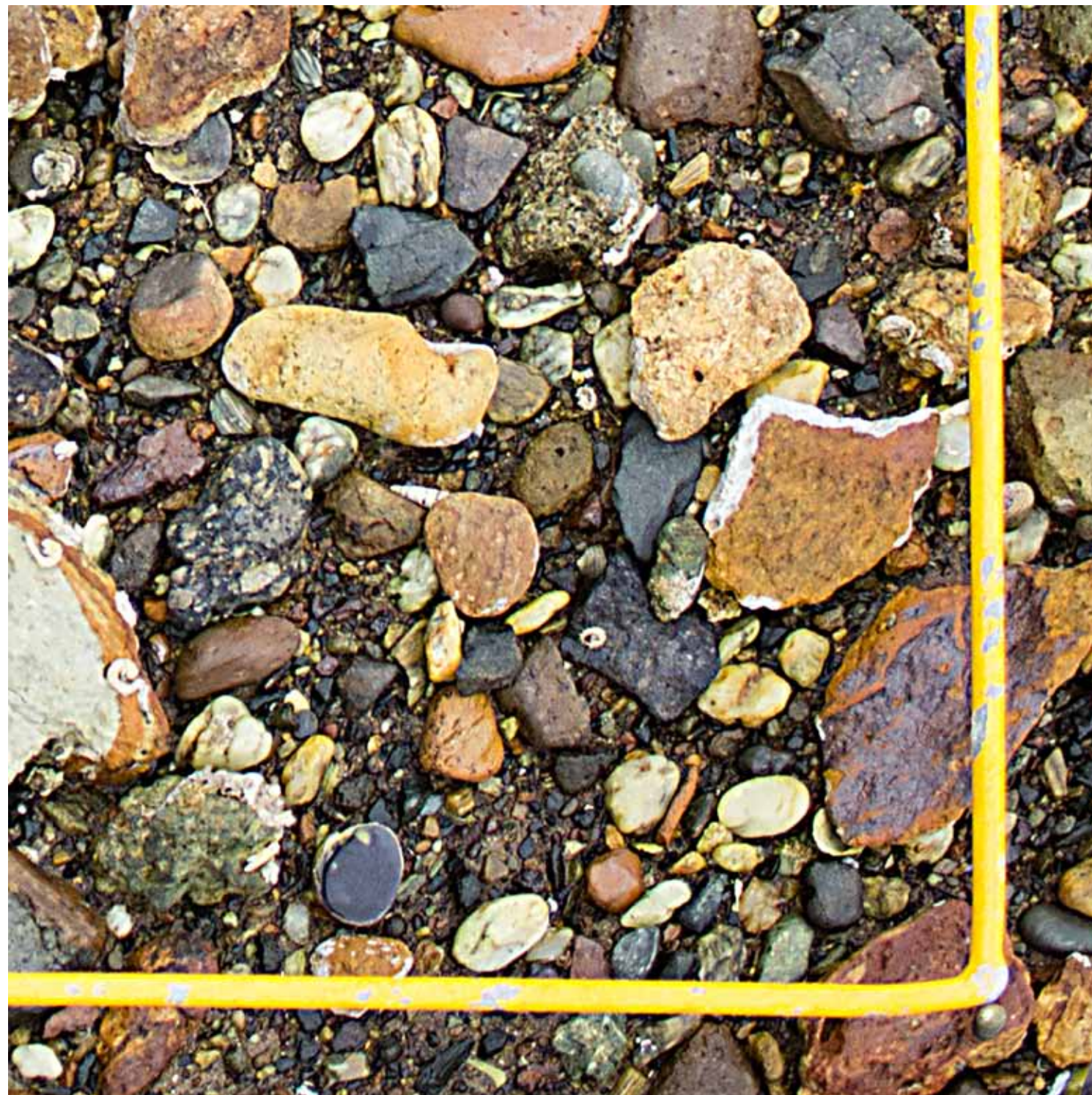
Count the Barnacles in a small area (eg the size of your palm) then multiply that number by the number of other palm-sized areas they cover.



© NZ Marine Studies Centre 2019







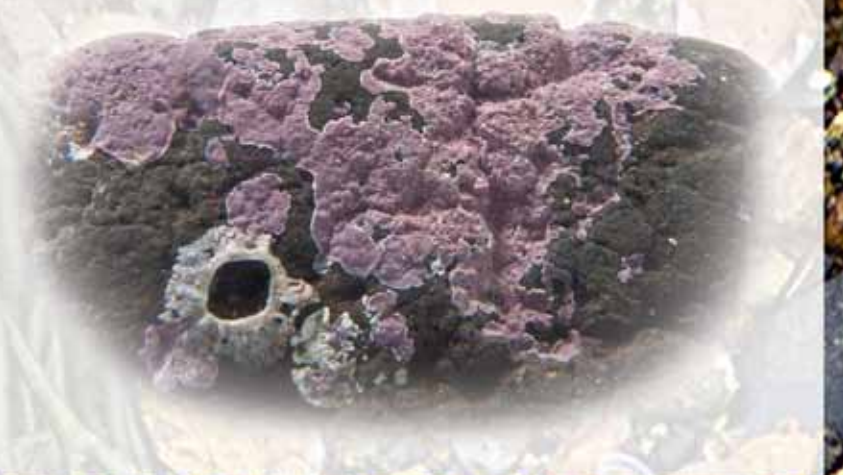
Look out for Encrusting Coralline Algae on rocks and other hard surfaces.

It looks like pink paint.

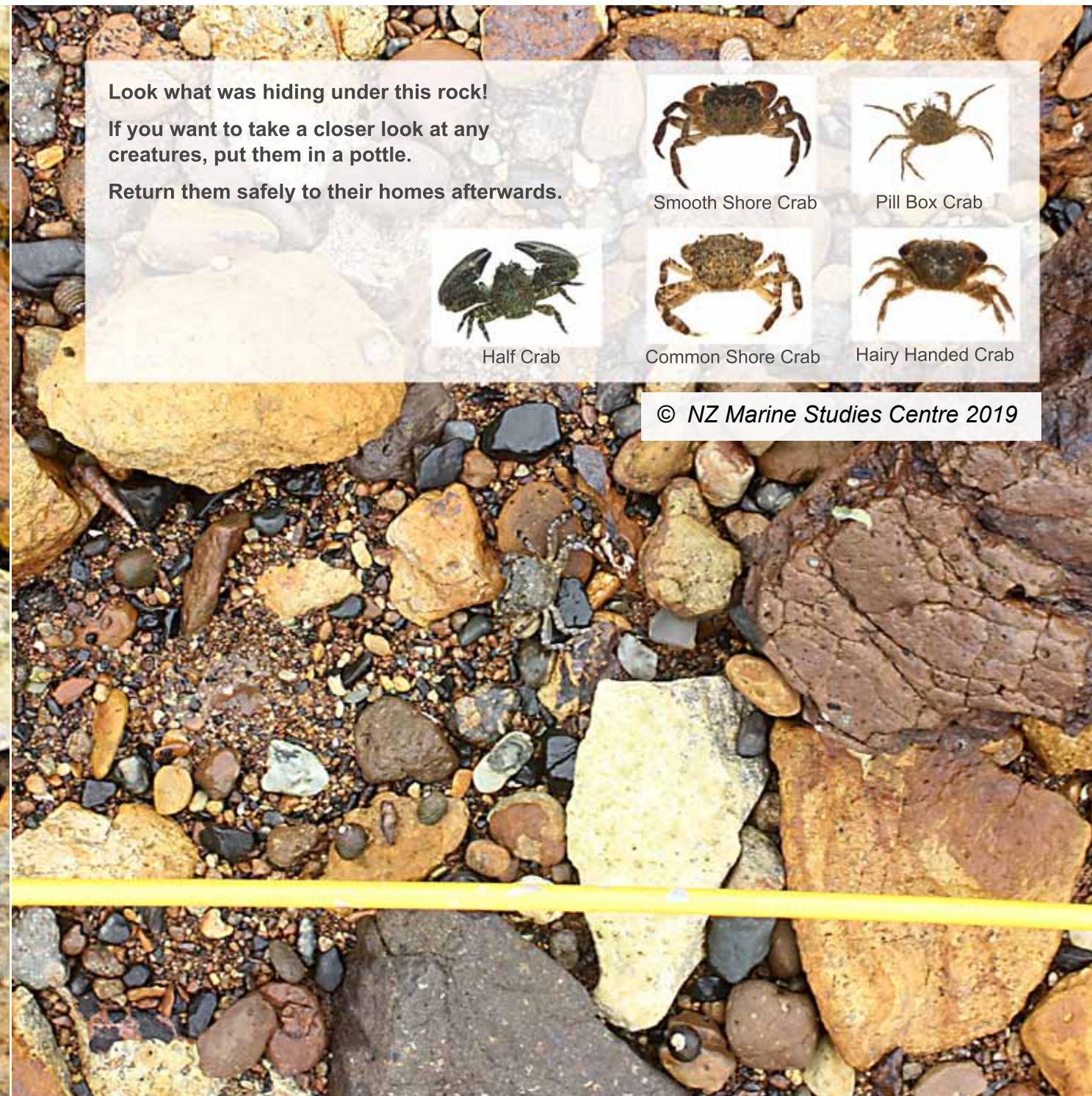
Sometimes it is white where it has been bleached by the sun.

Record it as a percentage.

A 10cm x 10cm patch is 1% of a square metre.











What kind of seaweed is this?

Seaweed attached to rocks and shells is still growing.

Do not pull seaweed off the rocks.

© NZ Marine Studies Centre 2019







Record seaweeds in your Marine Metre Square as a percentage of the square metre.

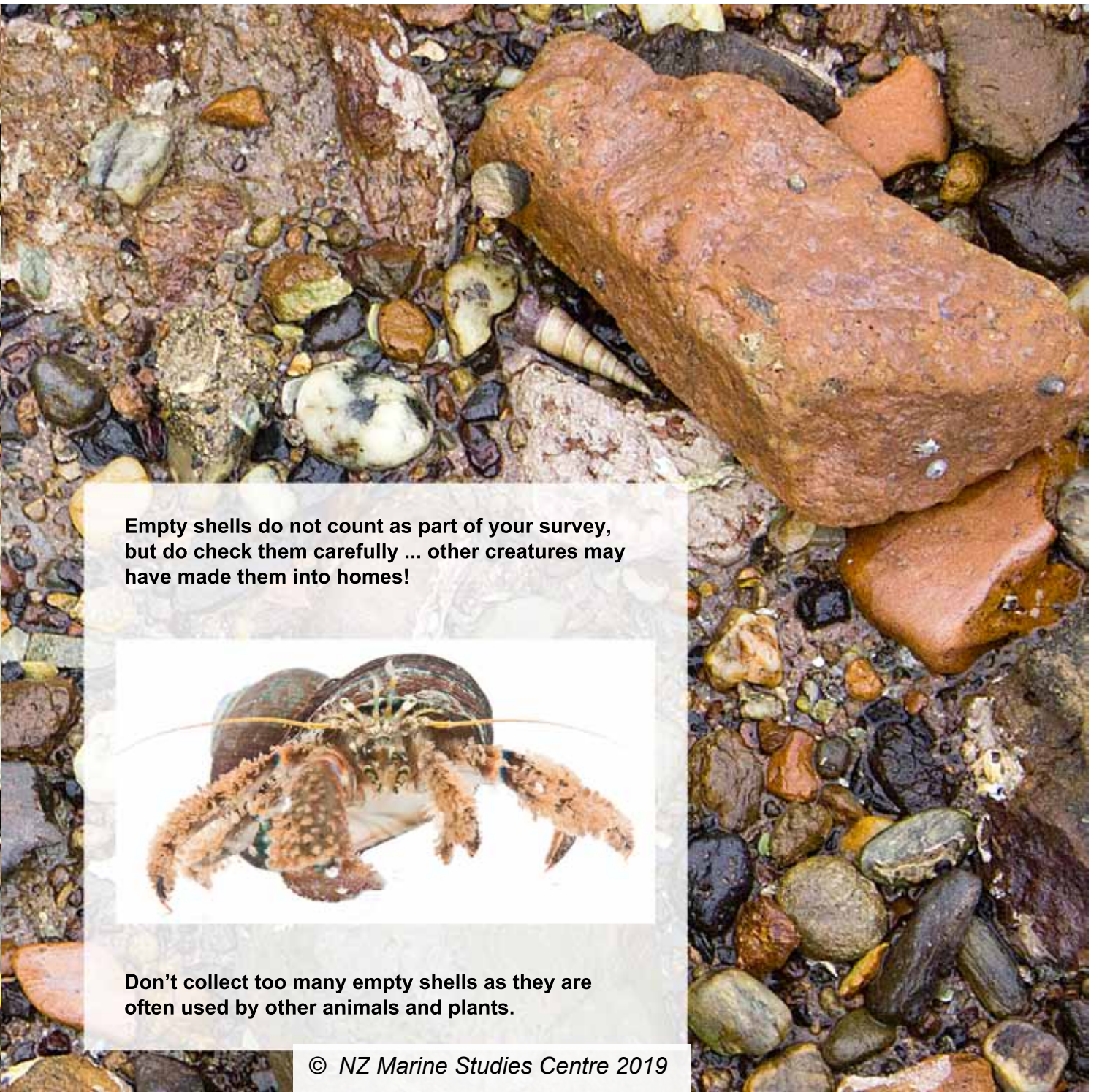
A patch 10cm x 10cm would be 1% of a square metre.

What kind of seaweed is this? What percentage of a square metre do you estimate that it covers?

© NZ Marine Studies Centre 2019







Empty shells do not count as part of your survey, but do check them carefully ... other creatures may have made them into homes!



Don't collect too many empty shells as they are often used by other animals and plants.





Tube Worms attach to any hard surface.

These filter-feeding animals trap food in their feathery tentacles which they extend when covered by water.

How many tubes have animals living in them?



© NZ Marine Studies Centre 2019







How many Chitons are hiding under this rock?

What else can you see?

Replace rocks carefully just where you found them.

Do not try to lift rocks that are larger than your head!

© NZ Marine Studies Centre 2019







How can you tell the difference between a Black Top Snail and a Cat's Eye Snail?



Simple! If you turn a Cat's Eye Snail over, you will see its lovely green trap-door!



© NZ Marine Studies Centre 2019

